

CHARGING INTO THE FUTURE.



Is new
battery
technology
the solution?

Today, the economy is moving steadily towards green energy and governments across the world are working towards renewable energy commercialization. A major challenge is the development of sufficient storage capacities and transmitting it to the consumers in various parts of the countries. Our goal for a low-carbon future is dependent on the availability of one critical element – rechargeable batteries. Not only as the core of EV, but also for electric grids, construction machinery, and high-end devices.

The German federal government has set the key *Energiewende* policy target of renewable energy share in the gross final energy consumption to be as high as 60% by the year 2050. These targets can only be fulfilled when the problems of storage, charging speed, transmission, raw material and availability of reusable elements are solved... [next page]

New battery technology and a transparent supply chain ecosystem is the key factor in answering these questions. Companies must produce batteries with an increased refinement and extract usable raw material before they are disposed in landfills. The EU has set the target that by 2030, at least 4% of the lithium in new batteries that are manufactured in EU should be from recycled material, but the problem is that there is already a shortage of recycled material which runs the risk of sustainable production getting delayed.

Battery reuse and smart-batteries that can hold more charge is a potential solution that companies are researching. There has been a surge in announcements concerning battery cell factories and the technology required to make them. "In the future, the most innovative and environmentally friendly battery cells will come from Europe, and tens of thousands of jobs will be created along the value chain," says Federal Economics Minister Peter Altmaier.

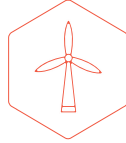
An example of this development is the battery manufacturer from Baden-Württemberg that is regarded as a global heavyweight, Varta. The company now intends to start producing larger battery cells and batteries with a new kind of lithium-ion cell on a pilot production line. The new cells are said to be characterized by an extremely high charging speed that can be used in cars and as buffer batteries for a fuel cell propulsion.

With strong incentives from the governments and a rising support from the public, battery manufacturers are encouraged to up their production and design new batteries keeping in mind how materials can be recycled, reused and repurposed.





**battery
systems**



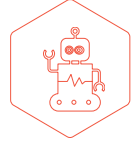
Storage



E-Mobility



Logistic
Systems



Industrials

Based out of Austria, E.Battery Systems provides **energy solutions** in it designing, manufacturing & testing of its in-house batteries. The company has the advantage & strength to develop high-performance batteries that are customized around the needs of customers.

In addition to post-delivery cloud solutions, the company also researches the future requirements & develops high innovative electromobility products, cell cooling systems and second-life-use applications. A fully developed hybrid system in fuel cells is expected to launch in 2022/23.

The firm has already taken the market by storm and secured an order with Swedish manufacturer RGNT worth at least 30 million euros, adding it to their list of high-end clients. With a brand new branch in Silicon Valley, the company has now entered the North American market.

Watch our exclusive interview
with CEO Christopher Schöpf



**Leading
technology to
power the
electrification
revolution**

Customer Base



DAIMLER



Continental





September 21, 2021:
AMEX drills copper rich VMS mineralization in first follow-up drillhole on the QF zone
[Read](#)

[Corporate Presentation](#)



September 17, 2021:
Drilling at galloway continues to provide good mineralized intersections
[Read](#)

[Corporate Presentation](#)



September 15, 2021:
G2 Technologies provides investor update
[Read](#)

[Corporate Presentation](#)



September 13, 2021:
Nouveau Monde joins marketplace & industry at the battery show – North America's largest advanced
[Read](#)

[Corporate Presentation](#)



September 07, 2021:
Clean Air Metals Reports New Drill Results from both the Current Lake and Escape Lake Deposits
[Read](#)

[Corporate Presentation](#)



September 02, 2021:
Tetra Bio-Pharma Receives Positive Scientific Advice Assessment (SAA) Report for QIXLEEF™
[Read](#)

[Corporate Presentation](#)



August 05, 2021:
Newrange Signs Agreement to Acquire Past-Producing, High-Grade Argosy Gold Mine in the Red Lake Mining Division
[Read](#)

[Corporate Presentation](#)



August 03, 2021:
Prosper Gold Extends Gold-in-Till Anomaly at Golden Corridor to 7.0 km Golden Sidewalk Project – Red Lake, Ontario
[Read](#)

[Corporate Presentation](#)



July 26, 2021:
Southern Empire Options Pedro Gold Project, México
[Read](#)

[Corporate Presentation](#)

WHAT IS A WALLET?

STORING MY CRYPTO

Cold Wallet



Digital Wallet

Protects cryptocurrency from hackers

Can be stored offline

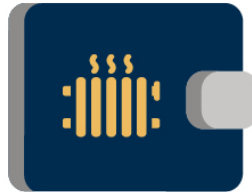
USB or Paper Wallets



Slower handling

Offline
USB-Stick

Warm Wallet



Online
with custodian

Hot Wallet



Digital Wallet

Practical handling for transactions

Connected to the internet

On crypto exchanges



vulnerable to cyber attackers

Online
on crypto exchanges

A "Wallet" in the crypto space is a digital wallet in which digital assets - such as cryptocurrencies and tokens - can be stored. Generally, a distinction is made between warm, hot and cold wallets.

License Umbrella

Are you looking for a License Umbrella?

[Contact](#)

At [CM-Equity](#), we are early involved as **corporate builders** and pioneers in the field of digital assets and licensed financial institute (fully regulated by [BaFin](#)). We work as an interfaced capital market infrastructure platform for digital assets for **companies, FinTech's and investors**.

This promotional communication is for advertising and information purposes only. It does not constitute a public offer. The information provided does not constitute an investment recommendation or an invitation to buy or sell securities and cannot replace professional investment advice. Any investment in financial instruments, and in particular shares, is associated with risks that may lead to a total loss of the capital invested. This promotional communication is not adapted to personal circumstances and needs. Any decision to subscribe, buy or sell a particular security should be made on the basis of adequate, unbiased information (e.g., investor information or prospectus⁹ and, if necessary, with the assistance of a professional investment advisor. CM-Equity does not provide such investment advice.

CM-Equity could not verify the assumptions underlying the information and forecasts provided, as these are not known. In particular, CM-Equity does not guarantee that the stated revenues, earnings or other projections will occur or that the stated objectives will be achieved. Insofar as the information contains forward-looking statements, in particular with regard to the price development of markets or securities, these are considered forecasts whose occurrence is not known. The performance numbers represent the realized returns in the past. A past performance is not a reliable indicator for future.

The Institute may receive a commission in connection with investment brokerage. Commissions and other benefits are disclosed to investors. CM-Equity may receive a consulting fee from companies. CM-Equity and its related persons or entities may hold shares of publicly traded companies or buy and sell positions on a day-to-day basis, creating a potential conflict of interest. CM-Equity has taken certain precautions to reduce such conflict. In this regard, a detailed operating procedure for such transactions has been issued. Nevertheless, a conflict between personal interests and the interests of the investors cannot be excluded.

CM-Equity does not assume any liability for the correctness and completeness of external links or statements of third parties. Liability claims against CM-Equity regarding material or immaterial losses caused by the use or non-use of any information provided, including any kind of information which is incomplete or incorrect, will therefore be rejected unless caused by intent or gross negligence on the part of CM-Equity. We reserve the right to make changes.

For more information:

Address: Kaufingerstraße 20 | 80331 | Munich | Germany

Website: www.cm-equity.de

Tel: +49 89 18904740 | Fax: +49 89 189047499 | Email: info@cm-equity.de

Social media:

[LinkedIn](#) | [Facebook](#) | [Twitter](#) | [YouTube](#) | [Instagram](#)

[Imprint](#) | [Data protection notice](#)